

ACTIVATE™ INOCULANTS

ALL NATURAL MICROORGANISMS FOR PERMANENT AND ROW CROPS, NURSERY AND TURF

FEATURES AND BENEFITS

ACTIVATE™ INOCULANT products are guaranteed, naturally occurring, beneficial microbial products that enhance the biodiversity of the soil ecosystem. By maintaining a diverse spectrum of beneficial microorganisms in the soil, disease organisms are suppressed, stronger plants and improved yields are seen, as well as improvements in the physical structure of the soil that create an optimum environment for plant growth.

Ongoing lab and field trials have demonstrated the wide range of improvements when **ACTIVATE™ INOCULANT** products are applied regularly to permanent crops such as trees and vines, as well as row crops, turf, and in nursery growing media.

ACTIVATE™ INOCULANT

products are diverse products with a broad range of uses, including fungal disease and nematode suppression, encouragement of beneficial mycorrhizae, stimulation of root growth, enhancing of stubble digestion and nutrient recycling in the soil, and waste water treatment.

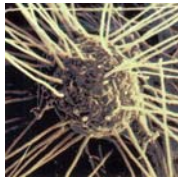
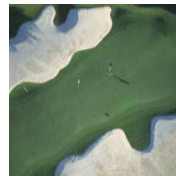
GUARANTEED ANALYSIS

ACTIVATE™ INOCULANT products contain differing combinations of the following organisms: *Bacillus pumilus*, *B. megaterium*, *B. subtilis*, *B. licheniformis*, *B. parabrevis* and *B. amyloliquefaciens*. Each organism is

guaranteed in concentration of cfu's per gram. All the bacilli originated in natural soil environments and have not been mutated or genetically engineered. **ACTIVATE™ INOCULANT** products can be stored indefinitely at temperatures between 35° and 86°.

ACTIVATE™ MICROBES

Bacillus pumilus grows in a pH of 5-10 and produces amylase, protease, cellulase and the highest level of xylanase. It produces anti-fungal compounds and compounds active against gram negative bacteria. *B. pumilus* will grow in up to a 5.5% salt solution. **B. megaterium** grows at a pH of 5-10 and produces amylase, protease, and cellulase. It has a very fast germination and growth, less than 1 hour in lab studies. **B. subtilis** grows at pH 4.5 to 10 and produces the highest enzyme level of all strains for amylase, protease, lipase, cellulase and xylanase. It also produces antifungal compounds. **B. licheniformis** grows at pH 5-10 and produces amylase, protease and a higher concentration of cellulase. It grows to a high concentration in waste degradation studies. It is a nitrate reducer and produces antifungal compounds and will grow in up to a 3.5% salt solution. **B. parabrevis** grows at pH 5-10 and produces amylase, protease and cellulase. It also produces antifungal compounds and inhibits pathogenic nematodes. **B. amyloliquefaciens** grows at pH 5.5-10 and produces amylase, protease and cellulase. It grows to a high concentration in waste degradation studies. It is a nitrate reducer and produces antifungal compounds. It can grow in up to a 3.5% salt solution.



Natural Resources Group, Inc.

34284-B Road 196
Woodlake, CA 93286
559.564.1236
559.564.1238 Fax
info@callnrg.com
www.callnrg.com

EASY APPLICATION

ACTIVATE™ PMSLA

Soil Treatment: To enhance soil biology and suppress biological pathogens use 50 to 100 grams (1 3/4 to 3 1/2 oz.) per crop cycle in multiple applications beginning at root flush in the spring. It is most effective when applied with a food supply of Wake Up Organo at a rate of 1/4 pound per 1,000 square feet.

Water Treatment: For sumps, ponds, and hydroponics, use 10 grams per 1,000 gallons of water in the first application and 5 grams every day until the problem is remedied.

ACTIVATE™ 2004

Soil Treatment: To enhance soil biology and suppress biological pathogens use 50 to 100 grams (1 3/4 to 3 1/2 oz.) per crop cycle in multiple applications beginning at root flush in the spring. It is most effective when applied with a food supply of Wake Up Organo at a rate of 1/4 pound per 1,000 square feet.

SLAP

Soil Treatment of Take-All Patch: Use 2 ounces of SLAP, 1 quart of Foundation and 15 pounds of Root Vigor 8-2-3 per 1000 square feet. Follow up applications should be every 30 days March through October at the reduced rates of 1/2

ounce SLAP and 8 ounces of Foundation per 1000 square feet. Root Vigor 8-2-3 should be applied every 5-6 months.

Soil Treatment of Dollar Spot: Use 2 ounces of SLAP per 1000 square feet of turf. Re-apply every 30 days as needed. For best results also apply Root Vigor 8-2-3 at 15 pounds per 1000 sq. ft.

ACTIVATE™ SP

Soil Treatment of Brown Patch: to suppress Rhizoctonia use 2 oz of SP per 1000 sq. ft. of turf beginning at root flush in the spring. Re-apply every 30 days as needed. For best results also apply Root Vigor 8-2-3 at 15 pounds per 1000 sq. ft.

