

BROWN PATCH

SCIENTIFIC JOURNAL FOR TURFGRASS DISEASES

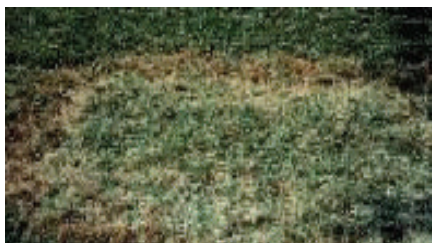
CHARACTERISTICS

Brownpatch, a fungal disease caused by *Rhizoctonia solani*, presents a serious threat to most turfgrasses each fall. With the onset of slightly cooler temperatures and wet conditions, brownpatch presents a challenge to the professional turf manager and homeowner. Conditions most favorable for brownpatch to develop include the (1) declining or slow growth rate of a susceptible grass, (2) daytime temperature ranges between 75° and 85° F, (3) the presence of excess moisture on the foliage, and (4) night temperatures below 68° F.

SYMPTOMS

On warm season turfgrasses, the disease is characterized by a circular pattern of brown grass with a yellowish colored ring (“smoke ring”) of wilted grass at the perimeter of the diseased area. The leaves can be easily pulled from the stolons within the “smoke ring” because the fungus destroys the tissue at the base of the leaf sheath. Symptoms first appear as small circular patches of water-soaked, dark grass that soon wilt and turn light brown. Stolons often remain green. As the disease develops, the circular patches enlarge, “smoke rings” become more apparent and new green leaves may emerge in the center of the circular areas. On cool season grasses, the disease first appears as dark green, water-soaked circular patches that range from a few inches to several feet in diameter. The affected leaves wilt and turn light brown, but remain upright. A dark, grayish-black ring (smoke ring) of wilted grass often is presented around the perimeter of the diseased areas in the early morning.

BROWN SPOT DISEASE PHOTOS



DISEASE CYCLE

When environmental conditions are favorable Brownpatch is likely to develop on susceptible turfgrasses. The severity of the disease can be somewhat controlled by moderate applications of nitrogen during spring and fall and by watering early in the morning to reduce dew and allow the grass to dry quickly.

RECOMMENDATION

In problem areas, apply 2 ounces of JumpStart SP per 1000 square feet of turf. Repeat application every 30 days until 4 treatments have been applied. For best results, also apply ROOT VIGOR 8 -2-3 with each treatment. At 15 pounds per 1000 square feet.



Natural Resources Group, Inc.
34284-B Road 196
Woodlake, CA 93286
559.564.1236
559.564.1238 Fax
info@callnrg.com
www.callnrg.com