

MYCORRHIZAL FUNGI

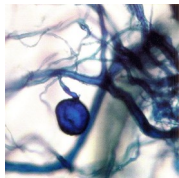
ALL NATURAL MYCORRHIZAL FUNGI BLENDS FOR PERMANENT AND ROW CROPS

FEATURES AND BENEFITS

Mycorrhizal fungi are found naturally in soils throughout the world and live a symbiotic relationship with plant roots. It is that structure formed between the root and fungus that creates the benefits to both root and fungus. Since the association is mutualistic, both organisms benefit from the association. The fungus receives carbohydrates and growth factors from the plants, which in turn receives many benefits, including increased absorption. In this association, the fungus enhances the role of roots hairs and acts as an extension of the root system. Mycorrhizae are the rule in nature, not the exception. More than 90% of all known species are benefitted by at least one type of mycorrhiza.

BLEND #1 - ENDO

MYCOAPPLY ENDO micron-ized inoculum consists of a 4 species blend of spores of arbuscular mycorrhizal fungi (endomycorrhizal fungi), well suited to a variety of soils, climates and plants including herbaceous plants, shrubs, ornamentals, fruit and nut trees, vegetables, and turf grass. *Glomus intraradices*, *G. mosseae*, *G. aggregatum* and *G. etunicatum*. Guarantee: 100,000 propagules/lb. Soluble powder comes in a particle size of less than 300 microns. These beneficial fungi colonize plant roots, expand into the surrounding soil, and greatly increase the roots ability to absorb water, nutrients, and improve yields.

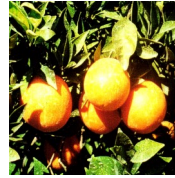


VERSATILE APPLICATION

MYCOAPPLY ENDO can be mixed into planting soil before/during filling of pots or trays. Use .25 to .75 pounds per cu. yd. **ROW CROPS:** Inoculum can be hydromulched or side dressed before or during planting at a rate of 10 pounds per acre. Use 1 - 2 pounds per acre as a seed coat. **TURF:** Apply during installation or aerification of turf. Use 2 pounds per 1000 sq. ft. **TREES AND VINES:** Apply inoculum to the planting holes of trees and vines. Use a rate of 20 pounds per acre. Available in UltraFine, Liquid and Granular formulations.

BLEND #2 - SOLUBLE MAXX

SOLUBLE MAXX soluble inoculum with gel carrier contains 20 different carefully selected Mycorrhizae spores, well suited to a variety of soils, climates and plants, especially critical for conifers, pines and hardwoods. Ecto Mycorrhizae: *Rhizopogon villosulus*, *R. luteolus*, *R. amylopogon*, *R. fulvigleba*, *Pisolithus tinctorius*, *Laccaria bicolor*, *L. laccata*, *Scleroderma Cepa*, *S. citrinum*, *Suillus granulatus* and *S. punctatapius*, 1.5 billion propagules/lb. Endo Mycorrhizae (Vesicular Arbuscular Mycorrhizae): *Glomus intratadices*, *G. mosseae*, *G. aggregatum*, *G. monosporum*, *G. brazilianum*, *G. clarum*, *G. Deserticola*, *Gigaspora margarita* and *G. etunicatum*, 31,200 propagules/lb. Also contains 19 bacteria species at 6 billion cfu/lb.



VERSATILE APPLICATION

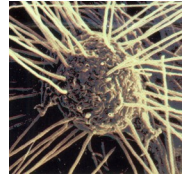
May be used as a root drench. **TREES AND VINES:** Mix 1 pound in 200 gallons of water and inject 1/2 gallon per tree or shrub 2 times per year. Can be used anytime roots are active. **B&B Plantings:** Mix 1 pound in 200 gallons of water and saturate root balls before planting. **NURSERIES:** Mix 1 pound in 200 gallons of water. Use as a root drench in porous media. Each pound covers 2000 square feet of nursery area for small plants or 4000 square feet of nursery area for plants 1 gallon size or larger. Can be used anytime roots are active. May be mixed with mechanical equipment that allows passage of No. 50 screen (300 microns) or larger particles.



Natural Resources Group, Inc.
34284-B Road 196
Woodlake, CA 93286
559.564.1236
559.564.1238 Fax
info@callnrg.com
www.callnrg.com

BLEND #3 - ENDO/ECTO

MYCOAPPLY ENDO/ECTO inoculum consists of an 11 species blend of spores of Endomycorrhizal and Ectomycorrhizal fungi well suited to a variety of soils, climates and plants including herbaceous plants, shrubs, ornamentals, fruit and nut trees, vegetables, and turf grass. Contains Endo species: *Glomus intraradices*, *G. etunicatum*, *G. aggregatum*, and *G. mosseae* 60,000 per pound. Ecto species: *Pisolithus tinctorius*, *Rhizopogon villosulus*, *R. luteolus*, *R. amylopogon*, *R. fulvigleba* *Scleroderma Cepa*, and *S.citrinum*, 110 million per pound. Available in granular and micronized formulations.



VERSATILE APPLICATION

NURSERIES: MYCOAPPLY ENDO/ECTO can be mixed into planting soil before/during filling of pots or trays. Use 2 pounds per cu. yd. **ROW CROPS:** Inoculum can be banded in rows or side dressed before or during planting at a rate of 20 pounds per acre or broadcast at a rate of 40 pounds per acre. **TURF:** Apply during installation or aerification of turf using .25 to .5 pounds per 1000 sq. ft. of turf. **TREES AND VINES:** Apply inoculum to the planting holes of trees and vines. Use a rate of 1 to 2 tbs. per gallon of planting size. **Ball and Burlap plantings:** Use .5 to 1.5 oz. per inch of stem caliper. **Cuttings:** Use 1.5 teaspoon under each cutting.

PRODUCT BENEFITS

- Better survival and growth rates after field planting by increased production of cytokinins and gibberellins.
- Improved water and nutrient uptake and increased disease resistance to nematode and phytopathogenic fungi such as *Fusarium* and *Rhizoctonia*.
- Reduced risk of plant loss and damage due to heat and drought stress.
- Improved planting range and performance of difficult-to-grow species.

